



AUSTRALIAN SHEEP & WOOL SHOW

Friday 17th July – Sunday 19th July 2026

Show times: Friday & Saturday 9am – 5pm Sunday 9am – 4pm

WOOLCRAFT COMPETITION SCHEDULE 2026

ENTRY FORMS

Must be received by

Friday 5th June 4.30pm

Do not send exhibits with entry form.

Late entry forms will not be accepted.

EXHIBITS

Posted by mail with return address clearly marked to arrive by end of

Friday 3rd July (tracked postage recommended)

Delivered by hand to Woolcraft (Arts & Crafts pavilion) at showgrounds

Monday 13th July 2pm - 4pm

Tuesday 14th July 9am - noon

Late exhibits will not be accepted.

ADDRESS

CEO ASBA

Woolcraft section

Unit 1 / 6 Merino Court

East Bendigo Vic 3550

Ph: 03 5443 9902

woolcraft@sheepshow.com

WOOLCRAFT CONTACTS

Terry Morris 0412 110 154

morris.terry.a@gmail.com

Marlene Leckie 03 5427 0202

marleahdesign@gmail.com

MORE DETAIL

australian-woolcraft.com

sheepshow.com

CONDITIONS OF ENTRY

1. Entries will only be received subject to the rules and regulations of the Australian Sheep Breeders' Association, Woolcraft Committee ("the Association").
2. All **entry forms** must be in the hands of the CEO on or before 4.30pm, **Friday 5th June 2026. Exhibits to arrive via mail by Friday 3rd July 2026** or be hand delivered by 12 noon **Tuesday 14th July 2026** (details front cover).
3. **Unless otherwise stated, all articles must contain at least 60% wool.** Wool blends – refer to glossary.
4. **The supplied sample bag must be firmly attached using the balloon safety pin to each exhibit. Any exhibit without samples will be ineligible for prizes.**
 - a. *Spinning*: supply sample of fleece/top, state breed or type of fleece/top.
 - b. *Handspun used in other categories*: supply sample of fleece/top, plus sample of yarn produced. State breed or type of fleece/top.
 - c. *Commercially spun yarn (or fabric when permitted)*: supply yarn/fabric samples and labels. If no label when purchased, state brand and place of purchase.
 - d. *If using purchased handspun (where permitted)*: include point of purchase or spinner's name and include 30cm sample for burn test.
 - e. A burn test will be conducted if fibre content is questionable.
5. Exhibit tickets and sample bags to be securely **pinned to front of exhibit** with supplied safety pin (never use straight pins). Marking the front of your exhibit ensures it is displayed correctly (neither inside out nor back-to-front).
6. To be considered for **Special Prizes**, indicate on the Tracking Form if exhibit is:
 - a. GORDON FORD made from 100% superfine merino (**only 17.6—18.5 micron**), provide documentary evidence from supplier and include a 30cm sample for burn test.
 - b. THEME AWARD- an interpretation of the theme:- **ECHOES OF THE PAST**
 - c. KURBURN PARK – an original handwoven apparel fabric, state intended purpose of fabric and give a brief description of the construction technique.
 - d. AUSTRALIAN FIBRE COLLECTIVE – Required documented evidence from supplier for provenance.
Commercially processed fibre and/or yarn, must have an Australian Fibre Collective Logo or Product of Australia Logo.
For fibre, a sample of the raw fleece and yarn to be attached and the preparation processes described.
7. All knitting to be worked by hand, excluding Classes 38, 39, 40 & 41. Seams to be hand worked, unless otherwise stated. For classes 38, 39, 40 & 41, state the make and model of the machine used.
8. Yarn when handspun, to be spun by exhibitor and include a 30cm sample for burn test.
9. Exhibits which have been made by more than one person are not eligible, other than in Classes 66, 67, 68, 69 & 70.
10. No commercial fabrics to be used other than linings and trimmings unless otherwise stated in classes 61, 62, 65, 66, 67 & 68.
11. Exhibits must not have been shown previously at an Australian Sheep & Wool Show Woolcraft Competition and must have been completed within the last 12 months. Articles using Art Yarn from previous years will be accepted in class 64.
12. A **Novice** is defined as one who has learnt the craft within the past 12 months and has not won a prize in the section entered.

CONDITIONS OF ENTRY *continued*

13. **No names, labels or photos showing any faces are to be attached to exhibits;** the only exception is age of exhibitor in classes 35 and 59.
14. Individual exhibits will be available for collection between **6 - 7pm Sunday, 19th July 2026** or between **9am - 12 noon Monday, 20th July 2026**. Collection of team exhibits outside these times may be pre-arranged.
15. Please place your name on all packaging. All items will be unpacked at check-in and set out in preparation for judging. **All care will be taken** of the exhibits submitted for competition and display. Any specific handling or consignment instructions should be noted on the Tracking Form. The Association shall not be responsible for the loss of, or damage to, any exhibit irrespective of the cause of such loss or damage.
16. **It is recommended that insurance be arranged by the exhibitor.**
17. The Woolcraft Committee of the Association shall have the power and right to:
 - a. Reject or cancel any entries at any time without assigning any reason.
 - b. Prohibit the participation by any person or any exhibit in any event for which it is entered without assigning any reason.
 - c. Alter the time at which any class or event is to take place or to alter the conditions of entry at any event.
 - d. Cancel any event or class without assigning any reason.
 - e. Parade any exhibit unless the exhibitor specifically requests on the Yellow Tracking Form that it not be paraded (except Classes 60, 61, 66, 67& 68);
 - f. Reserve the right to use photos and videos of entries at any time now or in the future.
 - g. Publish names of participants at the Show or in the future.
18. The Association reserves the right to adjudicate upon any entry or upon any question of dispute or doubt, and to make any determination upon any matter, whether covered by the conditions of entry or not, to the intent that the Association shall have sole and absolute control of all matters affecting the conduct of the Show and the exhibits entered or offered for exhibition therein.
19. The determination of the Association upon all points shall be final and conclusive without the right of appeal.

GIVE YOUR EXHIBIT ITS BEST POSSIBLE CHANCE

For **every** exhibit, carefully check:

- Class requirements
- Conditions of Entry
- Glossary definitions

SPONSORSHIP AND PRIZES

Prizes are awarded at the judges' discretion.

Cash prizes (where applicable) will be direct deposited into bank accounts. Contact will be made to obtain banking details.

Donated goods will also be awarded as available.

All prize winners will receive a Prize Card and Ribbon.

FEATURE BREED FOR 2026

English Leicester

The English Leicester is a large framed longwool sheep that has been part of the Australian sheep industry for almost 200 years. One of the a few true pure breeds, the English Leicester played a central role in to the evolution of the modern sheep industry.

The wool is stylish in character, free, high yielding, with a well-defined crimp and with a particularly high lustre. Lustre refers to the ability of the wool to reflect light, giving it a brighter appearance than other wools. English Leicester fleece takes dyes beautifully, making for rich bright colours, retaining its natural lustre with a soft silky feel.

For hand spinners and weavers, the wool has no superior for length and a soft silky handle. Wool from the fine end of the scale is most suitable for lace knitting, with the stronger wools used for outer garment knitting and crochet, hand woven wall hangings, rugs, and craft work. English Leicester fleece is also ideal for felting.

Selected fleeces are used to make dolls' wigs and dye perfectly in natural hair colours. Commercially spun knitting yarn is also available in 4 ply and 8 ply, hand dyed in a variety of colours.

Fibre diameter: 32 - 38 microns

Staple length: 200 - 250 mm

Fleece weights (ewe): 5 - 6



The English Leicester Association of Australia

WOOLCRAFT THEME FOR 2026

ECHOES OF THE PAST

SPECIAL PRIZES

Selected from all appropriate classes.

1 MOST OUTSTANDING ENTRY WITH 2026 THEME:

ECHOES OF THE PAST

Sponsor: Retired Woolcraft Committee Members

Perpetual Trophy: Kyneton Handweavers & Spinners Group

2 MOST INNOVATIVE ENTRY

Sponsor and Plaque: Tantech Pty Ltd

Suppliers of innovative fibre craft detergents

tantech
Innovation from Tanning Technology

3 KURBURN PARK MERINO STUD AWARD

IN MEMORY OF THE LATE TOM HARMSWORTH

Best designed original handwoven apparel fabric from natural fibre

Sponsor, Perpetual Trophy and Plaque:

Australian Association of Stud Merino Breeders



4 GORDON FORD MEMORIAL AWARD

Best entry using **100% superfine merino wool** (any technique)

Sponsor and Plaque: The Ford Family (Morrialane Merino Stud)

5 BENDIGO WOOLLEN MILLS AWARD

Best garment from **Australian** commercially spun yarn

Sponsor and Plaque: Bendigo Woollen Mills

BENDIGO
WOOLLEN MILLS

6 BEST IN SHOW — SPINNING

(classes 1 to 14 & 63)

Sponsor and Plaque:

Handweavers & Spinners Guild of Victoria Inc



7 AUSTRALIAN FIBRE COLLECTIVE AWARD

Best entry using **100% Australian** grown and processed fibre and/or yarn (any technique)

Sponsor and Plaque: Australian Fibre Collective



2026 WOOLCRAFT DEMONSTRATION SITE TO FEATURE WEAVING

HANDSPINNING SKEINS

Fleece From Sheep



Totally prepared by exhibitor from the same fleece.
Samples of fleece must be attached. State WPI and intended use.
If more than 1 skein per exhibit, tie skeins together.

1. Skein – fine (18 WPI or more) min 50gm **Wendy Thomas Award (Waverley Spinners & Weavers)**
2. Skein – medium (11-17 WPI) min 100gm (may be in 2 skeins)
3. Skein – bulky (10 WPI or less) min 100gm (may be in 2 skeins)
4. Skein – using natural dyes (state dye material used) min 100gm (may be in 2 skeins)
5. Skein – totally prepared by Novice, min 50gm.
6. Skein – spun entirely with drop / supported spindle (if plied, also using spindle), min 50gm (may be in 2 skeins)

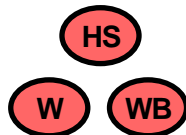
Commercial Wool Tops



Samples of wool tops must be attached. State WPI and intended use.
If more than 1 skein per exhibit, tie skeins together.

7. Skein – fine (18 WPI or more) min 50gm.
8. Skein – medium (11-17 WPI) min 100gm (may be in 2 skeins)
9. Skein – bulky (10 WPI or less) min 100gm (may be in 2 skeins)
10. Skein – using natural dyes (state dye material used) min 100gm (may be in 2 skeins)
11. Skein – totally prepared by Novice, min 50gm.
12. Skein – spun entirely with drop / supported spindle (if plied, also using spindle), min 50gm (may be in 2 skeins)

Wool / Wool Blend



All entries must contain a minimum of 60% wool – handspun, unspun or commercially prepared. Other fibres may be included: animal (e.g. silk, alpaca), plant (e.g. linen, cotton) and/or synthetics, provided overall wool content is observed. Yarn & fibre samples must be attached and intended use stated.

13. Skein – blended fibres, state fibre/s used, min 100gm (may be in 2 skeins)

Natural Animal Fibres



e.g. Alpaca, cashmere, mohair, llama, angora rabbit, silk.

May be blended. Fibre/s and hand spun yarn samples must be attached.

If more than 1 skein per exhibit, tie skeins together and intended use stated.

14. Skein – Natural Animal Fibre may be blended, state fibre/s used, min 100gm (may be in 2 skeins)

HAND KNITTING & CROCHETING USING HANDSPUN YARN ONLY

Wool Only



Attach samples of fibre & spun yarn, breed/type of fleece*.

Yarn to be both spun and knitted / crocheted by exhibitor.

15. Knitted Jumper or Cardigan using 13 WPI or thicker (may include some crochet)
16. Knitted Jumper or Cardigan using finer than 13 WPI (may include some crochet)
17. Crocheted Article (may include some knitting)
18. Knitted &/or Crocheted Cap / Hat / Headwear
19. Knitted &/or Crocheted Pair of Socks
20. Knitted &/or Crocheted Accessory (check Glossary – Accessory)
21. Lace Knitting / Knitted Lace Article
22. Knitted &/or Crocheted Article or Garment for child 0-5 years old.
23. Knitted &/or Crocheted Article using natural coloured wool

Other Natural Animal Fibres



e.g. alpaca, cashmere, mohair, llama, angora rabbit, silk.

Minimum 60% other animal fibre, may be blended with other natural fibres.

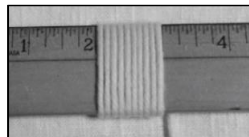
Attach samples of fibre & spun yarn, plus labels* must be attached.

Yarn to be both spun and knitted / crocheted by exhibitor.

24. Article – state fibre
25. Garment – state fibre

WPI *Wraps Per Inch.*

The number of yarn wraps to one (1) inch,
not pulling too tight, nor leaving too loose.



Erika Wells Memorial Ribbon (Grand Valley Spinners & Weavers) will be awarded to the Best Lace Article in either Handspun or Commercial Yarn

HAND KNITTING & CROCHETING

USING COMMERCIALLY SPUN YARN

Wool (minimum 60%)



Yarn samples and labels* must be attached.

26. Knitted Jumper or Cardigan using 8 ply/DK or thicker (may include some crochet)
27. Knitted Jumper or Cardigan using finer than 8 ply/DK (may include some crochet)
28. Crocheted Article (may include some knitting)
29. Knitted &/or Crocheted Article using own design—supply sketch & notes (max 1 x A4 page)
30. Knitted &/or Crocheted Cap / Hat / Headwear
31. Knitted &/or Crocheted Pair of Socks
32. Knitted &/or Crocheted Accessory (See Glossary – Accessory)
33. Lace Knitting / Knitted Lace Article
34. Article or Garment for child 0-5 years old
35. Knitted and or Crocheted Article made by a primary/secondary student (list age, school, and year level)

Other Natural Animal Fibres



e.g. alpaca, cashmere, mohair, llama, angora rabbit, silk.

Minimum 60% other animal fibre, may be blended with any other fibre e.g. cotton, linen, synthetic. Yarn samples and labels* must be attached.

36. Article – state fibre
37. Garment – state fibre

GIVE YOUR EXHIBIT ITS BEST POSSIBLE CHANCE

For **every exhibit**, carefully check:

- Class requirements
- Conditions of Entry
- Glossary definitions



Pure Wool



Wool Blend
(min. 60% wool)



Other Animal Fibres
(may contain up to 40% wool)



Handspun



Commercially spun

* See Condition of Entry no 4.

MACHINE KNITTING

All entries must contain a minimum of 60% wool.

Other fibres may be included: animal (e.g. silk, alpaca), plant (e.g. linen, cotton) and/or synthetics, provided overall wool content is observed.

Garment / outfit to be fully fashioned where appropriate.

Seams may be hand sewn or linked but not overlocked or machined.

Attach samples and state fibre,

State the make and model of the machine used

W

WB

- 38. Garment or Outfit
- 39. Child's Garment
- 40. Machine Knitted Socks
- 41. Any Other Article

FELT MAKING

HANDMADE FELT

Entries must contain a minimum of 60% wool (excluding classes 43 & 46) and be fully fashioned where appropriate. Seams may be hand sewn or machine stitched. If lined, leave an opening for inspection of back of felt.

Attach samples for all materials used and state the breed and/or fibre content for the wool fibre that is used (see Glossary).

Wool / Wool Blend

W

WB

- 42. Hand Felted Article (not wearable)
- 43. Hand Felted Garment (excluding Nuno method)
- 44. Hand Felted Accessory (e.g. scarf, hat, boots, bag)
- 45. Hand Felted Article / Garment – Nuno method
- 46. Hand Felted Article / Garment – commercially produced pre-felt / needle-felted batt

Other Natural Animal Fibres

AF

e.g. alpaca, cashmere, mohair, llama, angora rabbit, silk. Minimum 60% other animal fibre, may be blended with other fibres. Attach samples of fibre.

- 47. Hand Needle Felted Article – natural fibres



HAND WEAVING

Wool / Wool Blend

All entries must contain a minimum of 60% wool – handspun, unspun or commercially prepared. Other fibres may be included: animal (e.g. silk, alpaca), plant (e.g. linen, cotton) and/or synthetics, provided overall wool content is observed. Yarn & fibre samples must be attached.

HS

CS

W

WB

48. Length of Fabric, 2 metres or longer state intended purpose. **Peg Harper Award**

(Waverley Spinners & Weavers)

49. Article (e.g. wrap, shawl, scarf, poncho)

50. Constructed Article (e.g. hat, bag, toy)



51. Soft Furnishing (e.g. cushion, place mat, runner, knee rug, travel rug, wall hanging)

52. Floor Rug

53. Article made on a rigid heddle loom

54. Article made with, or using, band weaving. Must be minimum 50% wool.

55. Woven Tapestry—no more than 1 metre in any dimension

Wool and Other Natural Animal Fibres

e.g. wool, alpaca, cashmere, mohair, llama, angora rabbit, silk.

Minimum 60% animal fibre, may be blended with other

fibres: plant (e.g. linen, cotton) and/or synthetics, provided

overall other animal fibre content is observed. Item can be 100% wool.

Yarn samples and labels must be attached.

W

AF

HS

CS

56. Article / Garment / Outfit—state fibre

GIVE YOUR EXHIBIT ITS BEST POSSIBLE CHANCE

For **every** exhibit, carefully check:

- Class requirements
- Conditions of Entry
- Glossary definitions



HANDCRAFTS AT HOME

All entries must contain a minimum of 60% wool.

Natural fibres or wool blends may be included, provided overall minimum wool content is observed.

Synthetic filling permitted.

Yarn samples and labels must be attached.



57. Handcrafted Article using any technique

58. Handcrafted Toy using any technique

59. Handcrafted Article using any technique, made by a child up to 15 years old (state age)

FASHION GARMENTS

THESE GARMENTS MUST BE SUITABLE, AND AVAILABLE, FOR PARADE

All entries must contain a minimum of 60% wool.

Natural fibres or wool blends may be included, provided overall minimum wool content is observed.

Yarn samples and labels must be attached.

Be sure to include: Brief description of assembly, plus photo of entry on a model for display in cabinet while outfit is paraded (no visible faces please, to ensure anonymity at judging)



60. Garment / Outfit using handcrafted yarn or fabric

61. Garment / Outfit using commercial yarn or fabric, can include up to 40% handspun yarn.



Pure Wool



Wool Blend
(min. 60% wool)



Other Animal Fibres
(may contain up to 40% wool)



Handspun



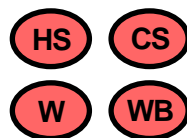
Commercially spun

* See Condition of Entry no 4.



INNOVATION & COOPERATION

All entries must contain a minimum of 60% wool – handspun, unspun or commercially prepared. Natural fibres or wool blends may be included, provided overall minimum wool content is observed. Labels and yarn samples must be attached.



INNOVATION

62. Handcrafted Article using innovative and creative techniques (e.g. Shibori, Saori weaving, dyeing, discharging, felting, machine embellishment, art yarn)
63. **Textures / Novelty / Art Yarn** (see glossary)
3 x 50gm skeins, 3 distinct spinning &/or plying techniques (not fractal spinning). Fleece, tops, other animal fibre, commercial core and other materials may be used. Include samples of **all** materials used, state fibre/s used. Tie skeins together. Include brief statement of inspiration, techniques used and intended use for each skein.
64. Article featuring Art Yarn (see glossary page 14), any technique (may use skeins entered in previous shows)
65. **Remake, Reuse & Reinvent**
Repurpose pre-loved wool (e.g. discarded garments, furnishings or scraps) into your own innovative design. Use any technique, or combination of techniques. Include “before” photo(s) & garment/product labels as well as yarn/fabric samples.

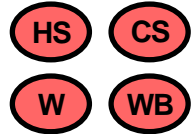
COOPERATION *may be made by more than 1 person*

66. Article / Garment / Outfit with creative interpretation of the theme: **ECHOES OF THE PAST** using multiple techniques. Include up to 100 words on developmental process.
 67. Garment / Outfit
 68. **Wearable Art**
 - Open to individual or group entry.
 - Entry needs to be a complete outfit i.e. if a skirt, it should also have a top. Accessories such as hats, shoes etc. can be included to complete the outfit.
 - Outfit should be unique, pushing boundaries.
 - The outfit must be original, creative, innovative and of good construction. It must be sufficiently robust to withstand quick changes in the parade.
 - Outfit may have a name / title that reflects its concept.
 - The outfit size must be stated and not less than size 10
 - Outfit's description should include any special features e.g. materials or techniques used.
 - If possible, all Wearable Art outfits will be paraded on the catwalk, based on the criteria being followed and subject to the discretion of the Association.
 - Multiple entries are encouraged.
- ★ **Be sure to include:**
Brief description of assembly, plus photo of entry on a model for display in cabinet, if outfit is paraded (no visible faces please, to ensure anonymity at judging) storyboard format.

TEAM COMPETITIONS

All entries must contain a minimum of 60% wool – handspun, unspun or commercially prepared. Natural fibres or wool blends may be included, provided overall minimum wool content is observed. Labels and yarn samples must be attached.

Include all names involved on the entry form



CLASS 69: TEAM / FAMILY COLLECTION

- A collection of 5 articles, showcasing a minimum of 3 different crafts e.g. knitting, weaving, felting, crochet, embroidery.
- Self-chosen theme** resulting in an intertwining entry. e.g. colour, tops and bottoms, texture.
- No storyboard. No diorama. No fancy display or props.
- Items will be judged solely on variety of crafts exhibited and skills displayed.

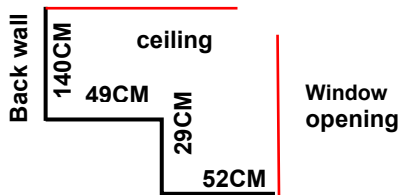
69. TEAM / FAMILY COLLECTION

CLASS 70: TEAM / FAMILY INTERPRETATION OF THE THEME:

ECHOES OF THE PAST

The display must be of good construction, transportable and assembled in such a manner that the judges are able to view the techniques used without disturbing the overall exhibit. Maximum dimensions: 1 metre wide, 1.3m high. Entries will be judged on originality, creativity, integrity and innovative interpretation of the theme.

Display cabinet has a window opening of 1.4m H x 1.0m W. The adjacent diagram gives the side elevation of the step within the cabinet



Each entry must:

- Include a minimum of 5 articles demonstrating a minimum of 3 crafts.
- The 5 articles to be judged must be listed, each have a sample bag of fibres and the capacity to be removed from the display and judged thoroughly.
- Be **accompanied by a 'storyboard'** (see page 18) to be displayed with exhibit. Storyboard should include an explanation of the interpretation of the theme, number of techniques used and where shown. Photographs may be included.
- Be entered in the Team name (refer to Glossary) – team members' names may be listed separately for display after judging.
- Unless other arrangements have been made, exhibit must be set up by team members between **2 - 4pm Tuesday 16th July** and dismantled by team members at a pre-arranged time after the show.

70. TEAM / FAMILY INTERPRETATION OF THE THEME: ECHOES OF THE PAST



GLOSSARY OF TERMS

This glossary has been compiled to assist exhibitors when entering the Woolcraft Section of the Australian Sheep & Wool Show. These terms are intended to be used for the purpose of clarifying the Show Schedule.

ACCESSORY Article worn to complete, or as part of, an outfit e.g. socks, mitts, scarf, shawl, jewellery, leg warmers, wrap.

ALPACA The fibre of the alpaca, an animal from the South American Camelidae family.

ANGORA The fibre of the angora rabbit.

ARTICLE A garment, accessory, toy or furnishing. When a class calls for an article, this means one (1) piece only.

ART YARN The manipulation of fibre using innovative/creative spinning techniques to produce a consistent, original style of yarn (not fractal spinning).

BLEND A mixture of fibres blended together. Unless otherwise stated a blend must contain minimum 60% wool.

CAMEL The fibre of the camel or dromedary. Either the coarse outer hair, as used for rugs, etc. or the soft under hair as used for jumpers, etc.

CASHMERE The fibre of the cashmere goat.

COMMERCIAL YARNS / FABRICS These are yarns / fabrics that have been purchased by the exhibitor. They have been commercially manufactured. In classes where these are permitted, it is a condition of entry to attach to the exhibit a sample of the yarn / fabric and any tickets or labels that were supplied with the yarn / fabric. If no labels, state brand and place of purchase.

COTTON The fibre of the cotton plant. The semi-processed stage (i.e. cleaned but unspun) is the origin of 'cotton wool' as used for medical purposes. This is not permitted as 'wool' in this schedule.

DESIGN Where applicable, includes design as a fashion garment (shape, silhouette, etc.) and design of motifs and patterns (whether alone or combined).

DISCONTINUOUS WEFT Weft does not go edge to edge but is built up in areas.

EMBELLISHMENTS Trims and embellishments can be used in small quantities to enhance an article where class permits. This includes buttons, laces, zips, metallic yarns, beads, ribbons, elastic, etc. These do not have to be of natural fibres or wool, provided they suit the design of the article.

FELT Handmade fabric using wool fibre, which is matted and fulled. It is formed by heat, moisture and friction.

— **Fulling** Is the second and final step of the felt making process. During this process the soft fabric is rolled, then rubbed and finally it is worked vigorously to make it shrink and compact to become a firm felt. It is an essential process and helps prevent pilling.

— **Knitted Felt** This is a knitted woollen article which is fulled.

— **Needle Felt** A dry felt technique where the wool is matted using a barbed needle or needles.

— **'Nuno' Felt** 'Nuno' - Japanese term for cloth, therefore Nuno felt is wool felted onto a layer of cloth.

FRACTAL SPINNING A method of systematically splitting a painted braid so when the fibre is spun & later knitted/crocheted, the colours are worked in a set sequence.

FINISHING All exhibits must be totally finished for judging. Washing of articles is permitted where this is part of the finishing process, e.g. to remove grease and dirt from handspinning, or to finish / set woven cloths.

GARMENT Clothing excluding accessories. Note that a garment may also be exhibited as an article. Garment examples include jumper / dress / coat / vest.

HANDCRAFTED Where this appears in the schedule, it means any technique the craft person chooses - spinning, knitting, crocheting, weaving, hooking, punching, felting, embroidery, etc. suitable to the purpose of the stated class number.

IDENTIFYING LABELS It is a condition of entry that no identifying labels should be visible to the judges. Any identifying labels on clothing, etc. must be removed or covered with a piece of fabric tacked over firmly. Any labels found by stewards will be removed or covered during judging. This also applies to faces in photographs.

INSPIRATION STATEMENT (individual entry) — See page 18.

JUTE Natural fibre obtained from the bast layer of the Corchorus plant. A 'stringy' yarn commonly identified with macramé.

LINING / INTERFACING etc. Garments may have commercially manufactured lining fabrics, interfacing, etc. of a natural or synthetic nature.

LINEN Natural fibre produced in many forms from the flax plant.

MOHAIR The natural fibre from the angora goat.

NATURAL ANIMAL FIBRES Those that are of animal origin (e.g. wool, silk, mohair, cashmere, alpaca, angora) as opposed to those that are of plant origin, artificial or regenerated by synthetic processes.

NATURAL PLANT FIBRES Those that are of plant origin as opposed to those that are of animal origin, artificial or regenerated by synthetic processes, e.g. cotton, linen, jute.

NOVICE Person who has learnt specified skill in last 12 months.

OTHER ANIMAL FIBRES Any fibre NOT derived from a Sheep.

OUTFIT An ensemble (2 or more pieces) of clothing that the wearer can 'step out' in, without having to add to.

PLY	<u>Fine</u>	18 WPI or more (approximately commercial 3 ply)
	<u>Medium</u>	11 – 17 WPI (thicker than commercial 3 ply yet thinner than 12 ply)
	<u>Bulky</u>	10 WPI or less (approximately commercial 12 ply or thicker)

SAMPLES A plastic sample bag is sent to all exhibitors for each entry, together with safety pin and exhibitor ticket showing Class No & Exhibit No.

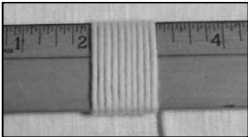
SAORI Woven as a plain weave structure with personal creativity, introduced by a free-flowing approach.

SHIBORI Techniques to give cloth a three-dimensional form by folding, twisting, binding and stitching.

SILK Fibre forming the cocoons produced by silkworms.

STORYBOARD — See page 18.

- SYNTHETIC** A manufactured fibre, e.g. nylon, polyester, etc. For the purpose of this schedule, this includes regenerated fibres e.g. viscose, bamboo, soy, Tencel.
- TEAM** Two or more people.
- TEAM COMPETITIONS** **Classes 69 & 70** are designed to encourage the participation of crafts people working as a team. Five exhibition tickets with sample bags are supplied – one sample bag must be attached to each of the five articles for judging. Photos and descriptions should be included to assist window dressers.
- TECHNIQUE** A distinct method in a particular craft.
- TOY** Usually made for children to play with but may be for visual enjoyment only.
- WOOL** The fibrous covering of **SHEEP**. For this schedule, 'wool' refers only to wool from a sheep NOT cotton-wool, Earthwool, steel-wool, etc.
- WOOL BLEND** This Show is encouraging the use of wool and, unless otherwise stated, wool blends (where permitted) must contain at least 60% wool.
- WOOL TOPS** Wool fleece, which has been scoured, carded and/or combed; the wool fibres are then drawn into slivers. In the skein spinning section Wool Tops can only be used in **Classes 7 – 12**.
- WOVEN TAPESTRY** Traditional weft faced, discontinuous weft tapestry, using wool as weft (as created by Australian Tapestry Workshop).



WPI *Wraps Per Inch*. The number of yarn wraps to one (1) inch, not pulling too tight, nor leaving too loose. See image to left.

YARN For the purpose of this schedule 'yarn' is commercially or handspun fibres.

W

Pure Wool

WB

Wool Blend
(min. 60% wool)

AF

Other Animal Fibres
(may contain up to 40% wool)

HS

Handspun

CS

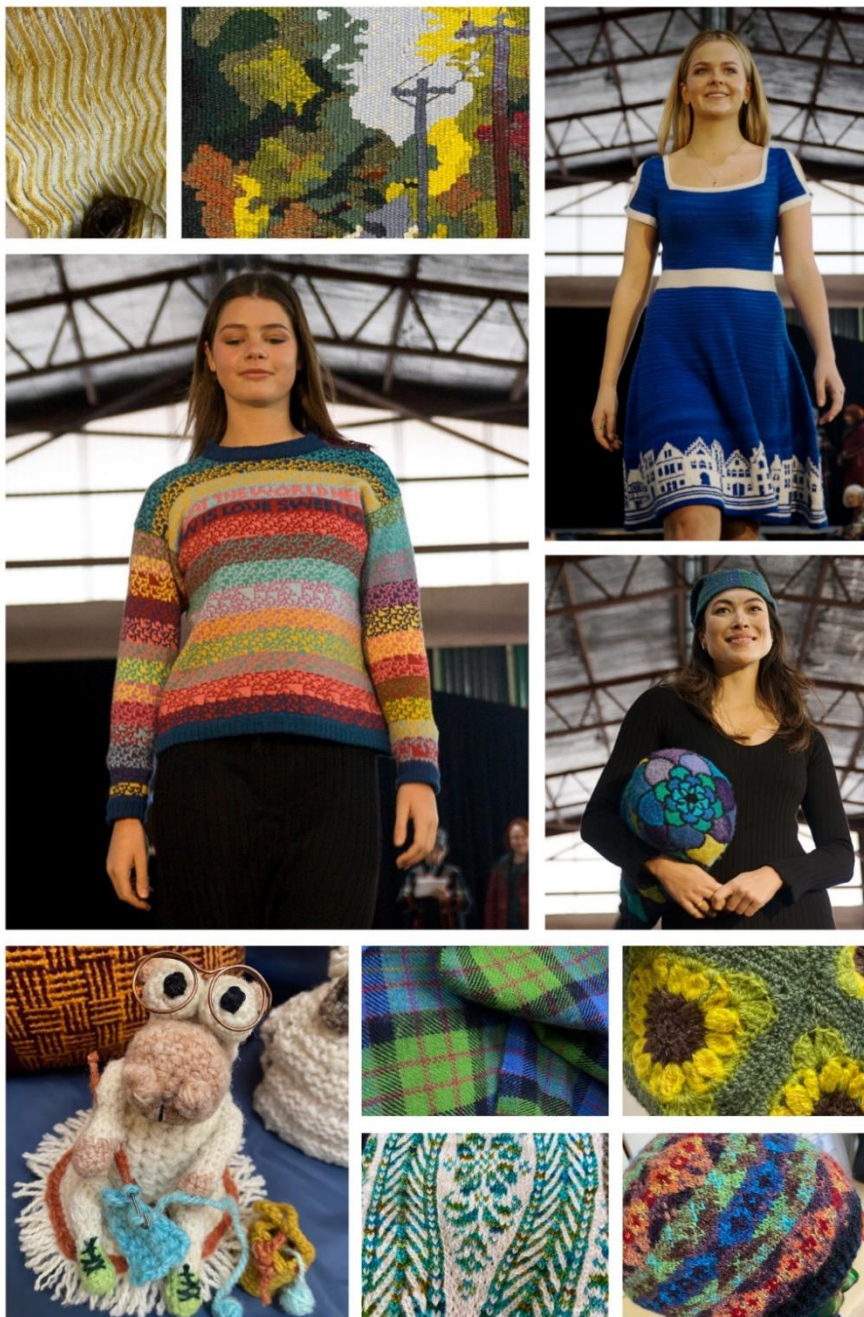
Commercially spun

* See Condition of Entry no 4.

Woolcraft Raw
Fleece Sales

At the Sheep Show — See us in
the Art and Craft Pavilion

WOOLCRAFT 2025



JUDGING

HAVE YOU EVER WONDERED WHAT JUDGES LOOK FOR?

When comparing articles that are frequently quite dissimilar, the judges award points in a range of categories, granting prizes according to total scores.

Before comparison of entries is considered, the judges check that all conditions of entry have been met for each exhibit.

Points are then awarded under topics such as:

- **Meets Conditions of Entry numbers 3, 4 & 5** — See page 2 (10 points available) If conditions are not met, 0 points will be awarded. The entry will be judged but is ineligible for a prize.
- **Suitability of Purpose** including texture, feel, materials, drape (10 pts)
- **Structure** including evenness, consistency, construction method, wearability (10 pts)
- **Finish** including blocking/finishing, appropriate surface texture, ends/fibres secure, appropriate seaming, selvedge, edge stitches, fully felted, any holes? (10 pts)
- **Presentation** can include neatness, colour, design (10 pts)
- **Overall impression of entry** the WOW factor (5 pts)

The inclusion of design notes, a storyboard or inspiration statement (see below) can be very influential when two entries have accrued identical scores.



○ DESIGN NOTES / INSPIRATION STATEMENT / TECHNIQUES

A maximum of 1 x A4 page—could show inspiration, design process &/or sampling. *Useful for judging but will not be displayed.*

○ INSPIRATION FOR THEME

A brief explanation is essential to illustrate your connection with the theme and the processes/techniques used. *Not necessarily displayed.*

○ STORYBOARD — TEAM ENTRIES — THEME

Creation of a storyboard about your entry is encouraged as these extra details can assist the judges. Storyboards can also include non-identifying photos.

For display purposes, please limit size of storyboard to one A3 or two A4 pages. *Not necessarily displayed.*

SPONSORS

THANK YOU TO ALL OUR 2025 GENEROUS SPONSORS

Australian Fibre Collective	Fleece, Frock and Fibre	My Creative Garage
Australian White Suffolk Association Inc	Fluff and Nonsense Yarn	National Wool Museum
Barlert Bagoork Moorroop	Ford Family Morrialane Merino Stud	Newstead Spinners and Weavers
Basketmakers of Victoria	Free Range Art	Owl of Anthena Fibre Arts
Beersheba Farm	Gembrook Craft Group	Jay Peterson
Bellevue Park Wool	Glenora Weaving and Wool	Pirate Purl Yarns
Bendigo Spinners & Weavers	Grand Valley Spinners & Weavers	Plenty of Thyme Fibrecraft
Bendigo Woodturners	Granite Haven Gotlands Llamas	Push My Buttons
Bendigo Woollen Mill	Green Tea	“Rosie and J”
Bridgewater Berets	Grey Bird Fibremaking	Shepherds Choice
Box Hill Spinners and Weavers	Marie Grylls	Shiloh Wool
Jan & Rob Brown	HalfBaked HandDyed Yarns	Sian's Yarns
Elizabeth Calnan Textiles	Handweavers and Spinners Guild of Victoria	Skein Machine
Cashmere Connections	Hobday Family	South Gippsland Spinners and Fibre Arts Group
Cat & Sparrow Fibres	Homeleigh Polworth Stud	Spinning Yarns Weaving Tales
Coal Creek Spinners	I Cast Mending	Tantech Pty.Ltd
Cobram and District Spinners and Weavers Inc	Jackie Made This	Tarnrdwarncourt Homestead
Colagirl Collective	Karoa Fibres	Teatime Yarn Retreats
Crocheted by Roxie Dairing	Kathys Fibres	White Rabbit Handmade
Janet Day (My Spin on Things)	Kilmaille	That Gift Shop
Dyed by Hand Yarns	Knit En Yarn	The Australian Yarn Co
Dyeing to Weave	Koorooman Wool Group	The Gamer Widows
East Gippsland Wool & Craft	Kyneton Spinners & Weavers	Uncle Johns Licorice
Earth Palette	Andrew Lakin	Victoria Stud Merino Sheep Breeders Association
Elisabets Handspun	Leachcim Wool	Wangaratta Handweavers and Spinners
Ewe Beauts Co-operative	Liz Green Arts	Waverley Spinners & Weavers
Fairfield Finns	Machine Knitters Association of Vic	Willow Vale
Feel Good Yarns	Made in Mo	White Rabbit Handmade
Fibre Arts Shed	Made Locally	Wool 'N' Wire
Fibre Naturally	Marilyn Mangione	Wool 2 Yarn
Fibres of the Yarra Valley	Marcia King	Wyndara Black Sheep
	MCClelland Spinners & Weavers	
	Moseley Park	

Thank you to our major sponsors of the Special Prizes



Victorian Stud Merino
Sheep Breeders
Association
merinovictoria.com



bendigowoollenmills.com.au

The Ford Family
(Morrialane Merino Stud)



Handweavers & Spinners Guild
of Victoria
hwsqv.org.au



tantech.com.au



australianfibrecollective.org

We are indebted to all our sponsors of the Woolcraft competition whose support continues to make this a highly regarded, successful event.

Please support those who support us.