



THE AUSTRALIAN SHEEP & WOOL SHOW BENDIGO

Friday 15th July – Sunday 17th July 2016

Show open: Friday & Saturday 9am – 5pm
Sunday 9am – 4pm

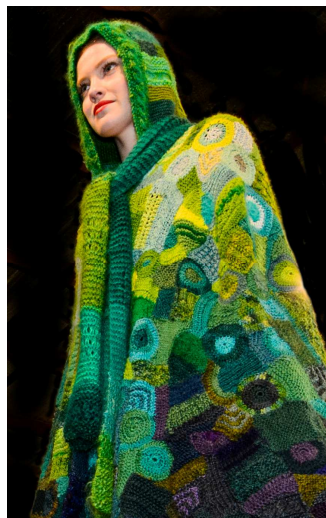
WOOLCRAFT SCHEDULE 2016

ENTRY FORMS

- **must be received by**
Friday 10th June, 4.30pm
(do not send exhibits with entry form)

EXHIBITS

- **posted by mail**
to arrive by Friday 1st July
(registered mail recommended)
- **delivered by hand**
Monday 11th July between 2pm & 4pm
Tuesday 12th July between 9am & 12 noon
Delivery instructions will be included with exhibitor tickets



ADDRESS

CEO ASBA
Unit 1 / 6 Merino Crt
East Bendigo Vic 3350
Ph: 03 5443 9902 Fax: 03 5443 9354
Email: sheepshow2016@gmail.com

WOOLCRAFT CONTACTS:

- Jay Peterson – (03 9561 9169)
Email: jpet36@gmail.com
- Dot Vallence – (03 9560 1621)
Email: dotv5@optusnet.com.au

MORE DETAILS

<http://australian-woolcraft.com>
www.sheepshow.com

CONDITIONS OF ENTRY

1. Entries will only be received subject to the rules and regulations of the Australian Sheep Breeders' Association, Woolcraft Committee ("the Association").
2. All **entry forms** must be in the hands of the CEO on or before 4.30pm, **Friday 10th June 2016. Exhibits to arrive via mail by Friday 1st July 2016** or be hand delivered by **Tuesday 12th July 2016** (details front cover).
3. **UNLESS OTHERWISE STATED, ALL ARTICLES MUST BE PREDOMINANTLY WOOL.** Wool blends – refer to glossary.
4. Exhibitors must firmly attach to **each exhibit** a sample of fleece, top and/or yarn, and state breed or type of fleece/top/yarn. Where commercial wool or wool blend is used, a yarn sample and label must be supplied. Where tops are used, a sample must be supplied. If no label on commercial wool when purchased, please include information regarding yarn source in the sample bag. **PLEASE STATE ON YELLOW DISPATCH FORM IF EXHIBIT IS MADE FROM MERINO or SUPERFINE MERINO** (less than 18.5 micron).
5. All knitting to be worked by hand excluding Classes 36, 37 & 38 and seams to be hand worked, unless otherwise stated.
6. Yarn when handspun, to be spun by exhibitor.
7. Exhibits which have been made by more than one person are not eligible, other than in Classes 64, 65, 67, 68 and 69.
8. No commercial fabrics to be used other than linings and trimmings unless otherwise stated in classes 55, 56, 57, 63, 65, 66 & 67.
9. Exhibits must not have been shown previously at an Australian Sheep & Wool Show Woolcraft Competition and must have been completed within the last 12 months.
10. Exhibit tickets and sample bags must be securely pinned to **front** of exhibit with a SAFETY PIN (DO NOT USE STRAIGHT PINS).
11. A **NOVICE** shall be one who has learnt his/her craft within the past 24 months and has not won a prize in the section entered. If novice, it must be clearly stated on dispatch form.
12. A garment may be exhibited as an "article" but in the "garment" sections, only garments will be accepted.
13. **NO IDENTIFYING LABELS ARE TO BE ATTACHED TO EXHIBITS**, except age of exhibitor in classes 53, 57 and 68. Also in class 61 if under 18.
14. Exhibits will be available for collection **after 6pm** on Sunday, 17th July 2016 or between 9.30am and 12 noon Monday, 18th July 2016.

CONDITIONS OF ENTRY continued

15. The Association reserves the right to adjudicate upon any entry or upon any question of dispute or doubt, and to make any determination upon any matter, whether covered by the conditions of entry or not, to the intent that the Association shall have sole and absolute control of all matters affecting the conduct of the Show and the exhibits entered or offered for exhibition therein.

16. The determination of the Association upon all points shall be final and conclusive without the right of appeal.

17. The Woolcraft Committee of the Association shall have the power and right to:

- (a) reject or cancel any entries at any time without assigning any reason;
- (b) prohibit the participation by any person or any exhibit in any event for which it is entered without assigning any reason;
- (c) alter the time at which any class or event is to take place or to alter the conditions of entry at any event;
- (d) cancel any event or class without assigning any reason;
- (e) parade any garments unless the exhibitor specifically requests on the dispatch form that the garments are not to be paraded (except Classes 62, 63, 66 & 67);
- (f) reserve the right to use photos and videos of entries at anytime now or in the future;
- (g) publish names of participants at the Show or in the future.

18. **All care will be taken** of all articles submitted for competition and display. Any specific handling or consignment instructions should be noted on the dispatch form. The Association shall not be responsible for the loss of, or damage to, any exhibit irrespective of the cause of such loss or damage.

19. **It is recommended that insurance be arranged by the exhibitor.**



Ensure **all requirements have been met** by carefully checking:

- Conditions of Entry (pages 2 & 3)
- Glossary (pages 13, 14 & 15)



- Any additional notes for judges should be supplied with your exhibit, not written on the entry/dispatch forms.
- Remember to remove/cover any identifying details

SPONSORSHIP AND PRIZES

Prizes are awarded at the judge's discretion.

CHEQUES (where applicable) will be posted following the show.

Donated goods will also be awarded as available.

All prize winners will receive a Prize Card and Ribbon.

Feature Breed for 2016: CORRIEDALE

Breed Origin

The Corriedale evolved simultaneously in both Australia and New Zealand in about 1874 by selectively breeding from cross bred progeny of pure Merino and Lincoln sheep. The breed was developed to meet a demand for a dual purpose animal with good meat characteristics and commercial wool production.

Today with over 125 years of line breeding behind it, the Corriedale is sufficiently fixed that hybrid vigour results when it is crossed with any other recognised pure breed.

Breed Identification and Description

The modern Australian Corriedale is a large framed, plain bodied, polled sheep, capable of producing heavy carcasses of lamb, hogget or mutton. Ideal for export and domestic markets, Corriedales produce heavy cutting bright fleeces, with good style, length and handle. Mean fibre diameter ranges from 25 to 30 microns in adult sheep to the low 20's in lambs and hoggets. Yields which vary according to environment are in the 75% range. Flocks are also in demand for hand spinning.

Other Attributes

Corriedales are docile, easy care animals, excellent mothers with high fertility. They adapt to a wide range of climatic conditions, sometimes at very high altitudes, and are known to be "good doers" in poor seasons and have a strong constitution. They are suitable to the vagaries of the changing sheep markets, maintaining above average returns at all times.

<http://www.corriedale.org.au>

SPECIAL PRIZES

Selected from all appropriate Classes
Extra consideration if Australian wool used

- **MOST OUTSTANDING ENTRY WITH 2016 THEME**

“Celebrating May Gibbs”

Sponsor: Retired Woolcraft Committee Members

Perpetual Trophy: Kyneton Handweavers & Spinners Group Inc

- **MOST INNOVATIVE ENTRY**

Sponsor: Tantech Pty Ltd – Innovative fibre craft detergents

- **KURBURN PARK MERINO STUD AWARD**

IN MEMORY OF THE LATE TOM HARMSWORTH

for best designed original handwoven apparel fabric from natural fibre

Sponsor & Perpetual Trophy: Australian Stud Merino Breeders Association

- **GORDON FORD MEMORIAL AWARD**

for best entry using superfine merino wool

Sponsor and Plaque: the Ford Family (Morrialane Merino Stud)

- **BEST ENTRY FROM A NOVICE**

Sponsor: Artwear Publications –

Yarn, Embellish, Felt, Textile, Vintage Made



- **“FIBRES BY NATURE” AWARD**

for most outstanding entry using only natural animal fibre, other than wool

Sponsor: Fibres By Nature – Australian processors of natural fibres

- **BENDIGO WOOLLEN MILLS AWARD**

for best garment from Australian commercially spun yarn

Sponsor: Bendigo Woollen Mills



HANDSPINNING

CLASSES 1 – 14

SKELN SPINNING (check Entry Conditions 3 & 6, plus Glossary)

● Fleece From Sheep

Totally prepared by exhibitor from the same fleece. Samples of fleece must be attached. State WPI and intended use.

1. Skein – fine (18 WPI or more) min 50gm
2. Skein – medium (11-17 WPI) min 100gm (may be in 2 skeins)
3. Skein – bulky (10 WPI or less) min 100gm (may be in 2 skeins)
4. Skein – using natural dyes (state dye material used) min 100gm (may be in 2 skeins)

Class 5 sponsored by East Gippsland Wool & Craft Group

5. Skein – totally prepared by Novice, min 50gm
6. Skein – spun entirely with drop / supported spindle (if plied also use spindle), min 50gm (may be in 2 skeins)

● Commercial Wool Tops

Samples of wool tops must be attached. State WPI and intended use.

Classes 7, 8 & 9 sponsored by First Edition Fibres & Yarns, Euroa

7. Skein – fine (18 WPI or more) min 50gm
8. Skein – medium (11-17 WPI) min 100gm (may be in 2 skeins)
9. Skein – bulky (10 WPI or less) min 100gm (may be in 2 skeins)
10. Skein – using natural dyes (state dye material used) min 100gm (may be in 2 skeins)
11. Skein – totally prepared by Novice, min 50gm
12. Skein – spun entirely with drop / supported spindle (if plied also use spindle), min 50gm (may be in 2 skeins)



● Other Fibres

Fibre samples must be attached. State your intended use for each skein.

13. Skein – Natural Animal Fibre may be blended, state fibre/s used, min 100gm (may be in 2 skeins)

Class 14 sponsored by "My Spin on Things" – Janet Knoop

14. Textured / Novelty / Art Yarn 3 x 50 gm skeins – 3 distinct spinning &/or plying techniques. Tops, commercial core and other materials may be used. Include samples of all materials used, state fibre/s used, plus include 25 words on your inspiration and destination for each skein.

HAND KNITTING & CROCHETING

USING HANDSPUN YARN ONLY

CLASSES 15 – 25

Check Conditions of Entry 3 & 6, plus Glossary

- **Wool Only**

Fibre and yarn samples must be attached.

15. Knitted Jumper or Cardigan (may include some crochet)
16. Crocheted Jumper or Cardigan (may include some knitting)
17. Knitted &/or Crocheted Article Using Own Design (supply sketch & notes)
18. Knitted &/or Crocheted Cap / Hat / Headwear
19. Knitted &/or Crocheted Pair of Socks
20. Knitted &/or Crocheted Accessory (check Glossary – Accessory)
21. Lace Knitting / Knitted Lace Article
22. Knitted &/or Crocheted Article Or Garment For Child 0-5 Years

Class 23 sponsored by Australian Black & Coloured Sheep Association

23. Knitted &/or Crocheted Article Using Natural Coloured Wool

- **Other Natural Animal Fibres**

eg Alpaca, Cashmere, Mohair, Llama, Angora Rabbit, Silk. May be blended. Fibre/s and hand spun yarn samples must be attached.

Classes 24 & 25 sponsored by Ixchel Angora Fibres & Yarns



24. Article – state fibre
25. Garment – state fibre

**Woolcraft Theme for 2016 is
Celebrating May Gibbs**

HAND KNITTING & CROCHETING

USING **COMMERCIALLY SPUN YARN**

CLASSES 26 – 35

Check Conditions of Entry 3 & 6, plus Glossary

- **Predominately Wool**

Yarn samples and labels must be attached.

Classes 26 – 29 sponsored by the Handknitters Guild of Victoria

26. Knitted Jumper or Cardigan (may include some crochet)
27. Crocheted Jumper or Cardigan (may include some knitting)
28. Knitted &/or Crocheted Article Using Own Design (supply sketch & notes)
29. Knitted &/or Crocheted Cap / Hat / Headwear

Classes 30 – 33 sponsored by



30. Knitted &/or Crocheted Pair of Socks
31. Knitted &/or Crocheted Accessory (See Glossary – Accessory)
32. Lace Knitting / Knitted Lace Article
33. Article or Garment for child 0-5 years

- **Other Natural Animal Fibres**

eg Alpaca, Cashmere, Mohair, Llama, Angora Rabbit, Silk, etc. May be blended.
Yarn samples and labels must be attached.

34. Article – state fibre
35. Garment – state fibre

MACHINE KNITTING

CLASSES 36 – 38

See Conditions of Entry 3, plus Glossary

All entries must be predominantly wool – natural animal fibre may be added eg Alpaca, Cashmere, Mohair, Llama, Angora Rabbit, Silk. Garments to be fully fashioned where appropriate. Seams may be hand sewn or linked but not overlocked or machined.
Attach samples and state fibre used.

Sponsored by Machine Knitters Association of Victoria

36. Garment or Outfit
37. Child's Garment
38. Any Other Article



HAND WEAVING

CLASSES 39 – 47

Check Conditions of Entry 3, plus Glossary

• Predominately Wool

All entries must be predominantly wool – handspun, unspun or commercially prepared.

In addition, natural fibres or wool blends may be used.

Yarn & fibre samples must be attached.

- 39. Garment
- 40. Length of Fabric minimum 2 metres
- 41. Article (eg stole, shawl, scarf, hat)
- 42. Soft Furnishing (eg cushion, place mat, runner)
- 43. Knee or Travel Rug
- 44. Floor Rug
- 45. Article Made on a Rigid Heddle Loom
- 46. Article Made on an Inkle Loom

• Other Natural Animal Fibres

eg Alpaca, Cashmere, Mohair, Llama, Angora Rabbit, Silk. May be blended.

Yarn samples and labels must be attached.

- 47. Article / Garment – state fibre

FELT MAKING

CLASSES 48 – 54

HANDMADE FELT – all entries must be predominantly wool (excluding classes 51 & 54) and fully fashioned where appropriate. Seams may be hand sewn or machine stitched.

If lined, leave opening for inspection of back of felt. Attach samples for all materials used and state the breed and/or fibre content for the wool fibre that is used (see Glossary).

Sponsored by the Victorian Feltmakers Inc.

- 48. Hand Felted Article (not wearable)
- 49. Hand Felted Garment
- 50. Hand Felted Accessory (eg scarf, hat, boots, bag)
- 51. Hand Felted Article / Garment – nuno method
- 52. Hand Felted Article / Garment – commercially produced pre-felt / needle-felted batt
- 53. Hand Felted or Needle Felted Article or Garment made by a student
(state age, school and course/year level)
- 54. Needle Felted Article – natural fibres



WOOL EMBROIDERY

CLASSES 55 – 57



Sponsored by Bendigo Branch of The Embroiderers Guild

All embroidery to be worked predominantly in wool, a non-wool background may be used.

55. **Traditional Embroidery** – Traditional approaches such as crewel work, surface stitchery, canvas work and needle lace are some of the techniques suitable for this class. Entry will be judged on suitability of design, technique, use of colour and materials.

56. **Creative / Innovative Embroidery** – Entry will be judged on original design and an innovative approach to the use of stitch, colour and materials.

No kits or commercial computer design will be accepted.

57. **Junior Embroidery** (Entrant must be under 15 years of age at date of show)

Entry can be worked in traditional techniques or creative applications.

Suggested articles may be pictures, cushions, bags. State age.

HANDCRAFTS AT HOME

CLASSES 58 – 61

All entries must be predominantly wool, eg handspun, unspun or commercially prepared. Labels and yarn samples must be attached. Natural fibres or wool blends may be used

58. Handcrafted Article / Toy using any technique – handspun or unspun wool (eg felt)

59. Handcrafted Article / Toy using any technique – commercial wool

Class 60 sponsored by the Strong Wool Sheep Breeders Association

60. Handcrafted Article / Toy using strong fleece (eg Lincoln, English Leicester, Romney, Border Leicester, Cheviot, Perendale, Drysdale)

61. Handcrafted Article / Toy using any technique made by a student
(list school plus age / course)

FASHION GARMENTS

CLASSES 62 – 63

THESE GARMENTS MUST BE SUITABLE, AND AVAILABLE, FOR PARADE

* remember to include photo of garment on a model for display when garment is paraded
Entries must be predominantly wool.

62. Garment / Outfit * using handcrafted yarn or fabric

63. Garment / Outfit * using commercial yarn or fabric

COOPERATION & INNOVATION

CLASSES 64 – 66

Class 64 sponsored by



64. **NEW** – Creative interpretation of the theme “Celebrating May Gibbs”, using multiple techniques. May be made by more than 1 person. Include a short summary of development process (max 100 words).
65. Garment / Outfit made by 2 or more people
66. Handcrafted Article using innovative techniques (eg shibori, saori weaving, dyeing, discharging, felting, machine embellishment)

Class 67 sponsored by Glenmaye B & B, Euroa

67. **Wearable Art**

Wearable Art is art that can be worn

- Open to individual or group entry.
- Entry needs to be a complete outfit ie if a skirt, it should also have a top.
- The outfit **should be unique and surpass cocktail / eveningwear**.
- Accessories such as hats, shoes etc. can be included to complete an outfit.
- **The outfit must be**
 - predominately wool.
 - original, creative, innovative and of good construction.
 - sufficiently robust to withstand quick changes in the parade.
- The outfit may have a name / title that reflects its concept.
- The outfit's description should include any special features eg materials used, techniques employed.
- The outfit size must be stated and not less than size 10.
- Multiple entries are encouraged.
- If possible all Wearable Art outfits will be paraded on the catwalk, based on the criteria being followed and subject to the discretion of the Association.

Be sure to include:

- photo of entry on a model for display if outfit is paraded
- brief description of assembly
- labels & samples of all fibre / yarns used

TEAM COMPETITIONS

CLASSES 68 – 69

68. ENTRY MADE BY A TEAM OF STUDENTS YEAR 9 OR BELOW

- Must be predominantly wool – handspun, unspun or commercially prepared.
- In addition, natural fibres or wool blends may be used (Refer to Cond. Entry 3).
- Consideration will be given to the suitability of materials, variety of techniques, finish, quality, originality, creativity and design.
- Entry to be in the School Name.
Names of students can be provided for display after judging.
- Photographs and descriptions of exhibit should be included to assist assembly.
- Samples of fibre, yarn and labels to be included and attached to the exhibit.

69. TEAM / FAMILY ENTRY

This class allows for the interpretation of the theme in textile form.

If it is a diorama, the display must be of **good construction** and assembled in such a manner that the judges are able to view the techniques used without disturbing the overall exhibit. It must not exceed 1 metre in width.

Entries will be judged on originality, creativity, integrity and innovative interpretation of the theme.

Entries must:

- be predominantly wool; other materials and fibres may be used to enhance the display.
- include a minimum of 5 articles demonstrating a minimum of 5 techniques overall (refer to Conditions of Entry 3). The 5 articles to be judged must be listed and each one accompanied by a sample bag of fibres.
- be **accompanied by a 'storyboard'** (refer to Glossary) to be displayed with exhibit. Storyboard to include an explanation of the interpretation of the theme, the number of techniques and where used. Photographs may be included.
- be entered in the Team name (refer to Glossary) – include separate list of team members names for display after judging.

**Woolcraft Theme for 2016 is
Celebrating May Gibbs**

GLOSSARY OF TERMS

This glossary has been compiled to assist exhibitors when entering the Woolcraft Section of the Australian Sheep & Wool Show. These terms are intended to be used for the purpose of clarifying the Show Schedule.

ACCESSORY: Item worn to complete, or as part of, an outfit eg socks, mitts, scarf, jewellery, leg warmers.

ALPACA: The fibre of the alpaca, an animal from the South American Camelidae family.

ANGORA: The fibre of the angora rabbit.

ARTICLE: The item that is to be exhibited. A garment may be exhibited in a class calling for an article, but only garments can be exhibited in garment classes (see 'garment' below). When a class calls for an article, this means one (1) article only.

CAMEL: The fibre of the camel or dromedary. Either the coarse outer hair, as used for rugs, etc. or the soft under hair as used for jumpers, etc.

CASHMERE: The fibre of the cashmere goat.

COMMERCIAL YARNS / FABRICS: These are yarns / fabrics that have been purchased by the exhibitor. They have been commercially manufactured. In classes where these are permitted, attach to the exhibit a sample of the yarn / fabric and any tickets or labels that were supplied with the yarn / fabric. If no labels, state brand and place of purchase.

COTTON: The fibre of the cotton plant. The semi-processed stage (ie cleaned but unspun) is the origin of 'cotton wool' as used for medical purposes. This is not permitted as 'wool' in this schedule.

DESIGN: Where applicable, includes design as a fashion garment (shape, silhouette, etc.) and design of motifs and patterns (whether alone or combined).

EMBELLISHMENTS: Trims and embellishments can be used in small quantities to enhance an article where class permits. This includes buttons, laces, zips, metallic yarns, beads, ribbons, elastic, etc. These do not have to be of natural fibres or wool, provided they suit the design of the article.

FELT: Handmade fabric using wool fibre, which is matted and fulled. It is formed by heat, moisture and friction.

– **Fulling:** Is the second and final step of the felt making process. During this process the soft fabric is rolled, then rubbed and finally it is worked vigorously to make it shrink and compact, becoming a firm felt. It is an essential process and helps prevent pilling.

– **Knitted Felt:** This is a knitted woollen article which is fulled.

– **Needle Felt:** A dry felt technique where the wool is matted using a barbed needle or needles.

– **'nuno' Felt:** 'nuno' = Japanese term for cloth, therefore nuno felt is wool felted onto a layer of cloth.

GLOSSARY OF TERMS (continued)

FINISHING: All exhibits must be totally finished for judging. Washing of articles is permitted where this is part of the finishing process, eg to remove grease and dirt from handspinning, or to finish / set woven cloths.

GARMENT: A garment is an article that can be fitted onto the body.

NB It is acceptable to exhibit a garment as an article.

HANDCRAFTED: Where this appears in the schedule, it means any technique the craft person chooses - spinning, knitting, crocheting, weaving, hooking, punching, felting, embroidery, etc. suitable to the purpose of the stated class number.

IDENTIFYING LABELS: No identifying labels should be visible to the judges. Any identifying labels on clothing, etc. must be removed or covered with a piece of fabric tacked over firmly. Any labels found by stewards will be removed or covered during judging. This also applies to faces in photographs.

JUTE: Natural fibre obtained from the bast layer of the corchorus plant. A 'stringy' yarn commonly identified with macramé.

LINING / INTERFACING ETC: Garments may have commercially manufactured lining fabrics, interfacing, etc. of a natural or synthetic nature.

LINEN: Natural fibre produced in many forms from the flax plant.

MOHAIR: The natural fibre from the angora goat.

NATURAL ANIMAL FIBRES: Those that are of animal origin as opposed to those that are of plant origin, artificial or regenerated by synthetic processes, eg wool, silk, mohair, cashmere, alpaca, angora.

NATURAL PLANT FIBRES: Those that are of plant origin as opposed to those that are of animal origin, artificial or regenerated by synthetic processes, eg cotton, linen, jute.

NOVICE: Person who has learnt specified skill in last 24 months.

OUTFIT: An ensemble (2 or more pieces) of clothing that the wearer can 'step out' in, without having to add to.

PLY: Fine: 18 WPI or more (approximately commercial 3 ply)

Medium: 11 – 17 WPI (thicker than commercial 3 ply yet thinner than 12 ply)

Bulky: 10 WPI or less (approximately commercial 12 ply or thicker)

SAMPLES: A plastic sample bag is sent to all exhibitors for each entry, together with exhibitor tickets (showing Class No and Exhibit No). These must be firmly attached to the exhibit with safety pins. Handspun entries must include a sample of fleece and yarn produced, state breed or type of fleece. Where commercial yarns / fabrics are permitted, a sample must be attached, with any labels from the yarn / fabric. If no labels, state brand and place of purchase.

ANY ENTRY WITHOUT SAMPLES WILL BE DISQUALIFIED.

Woolcraft Theme for 2016 is Celebrating May Gibbs

GLOSSARY OF TERMS (continued)

SAORI: Woven as a plain weave structure with personal creativity, introduced by a free flowing approach.

SHIBORI: Techniques to give cloth a three dimensional form by folding, twisting, binding and stitching.

SILK: Fibre forming the cocoons produced by silk worms.

STORYBOARD: A description detailing the development sequence of your exhibit. The presentation and content will be taken into consideration when judging and may be displayed with exhibit.

SYNTHETIC: A man-made fibre or yarn, eg nylon, polyester, etc. For the purpose of this schedule, this includes regenerated fibres eg viscose, bamboo, soy, Tencel.

TEAM: Two or more people.

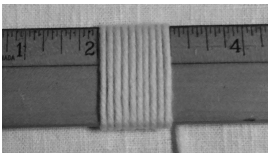
TEAM COMPETITIONS CLASSES 68 & 69: These classes are designed to encourage the participation of crafts people as a team. Five exhibition tickets with sample bags are supplied – one sample bag must be attached to each of the five articles for judging. Photos and descriptions should be included to assist window dressers.

WOOL: The fibrous covering of SHEEP. For this schedule, 'wool' refers only to wool from a sheep NOT cotton-wool, Earthwool or steel-wool, etc.

WOOL BLENDS: This Show is encouraging the use of wool and, as such, wool blends (where permitted) must contain at least 60% wool.

WOOL TOPS: The wool fleece, which has been scoured, carded and/or combed. The wool fibres are then drawn into slivers. In the skein spinning section Wool Tops can only be used in Classes 7 – 12.

WPI: = Wraps Per Inch. The number of yarn wraps to one (1) inch.



YARN: For the purpose of this schedule 'yarn' is commercially or handspun fibres.

In 2016, Woolcraft is Celebrating May Gibbs

On the 2015 catwalk



Creation of a storyboard about your entry is encouraged, as extra details can often assist the judges. For individual entries, descriptions should be limited to a total of 40 words, but there's no limit for team entries. Storyboards may also include photos.